

---

## **B1 Event Structure**



## Public Open House Input Kiosks

### Kiosk #1 Welcome & Registration

#### Boards:

1. Welcome
2. Purpose & Objectives of Tonight's Public Event

#### Materials:

Item	Responsibility of
Sign In Sheets	PACE
Comment Sheets and Comment Box	PACE
Pens	PACE
Reference Material	AECOM

#### Equipment:

- One table, two chairs for sign in
- One table ~ Reference Material
- One table, eight chairs, for Comment Sheets

#### Staff:

1-2 Hosts (E & F)

### Kiosk #2 Introduction

2. Background and Context
3. EA process
4. Purpose of the Project (from Phase 1)
5. Study Design Overview

#### Materials:

- None Required

#### Equipment:

- None Required

#### Staff:

1-2 Hosts (E & F)

Some general knowledge of the project

### Kiosk #3 Process Framework

#### Boards:

6. Phase 2B Process Framework
7. Explanation of each Framework Box (2 Boards)
8. Comment Board - English (white space for collection of comments)
9. Comment Boards – French (white space for collection of comments)

#### Kiosk Process:

- General Discussion on the framework as requested (at small table or standing around the display boards)
- Comments collected individually and/or on the Comment Board
- Kiosk expert will be available for conversation on the Framework for the duration of the event
- One large blank board titled 'Comments' to collect post-It notes (4 x 6 size, lined) with comments

Item	Responsibility of
Laminated Copies of the framework (11 x 17, 10 copies)	AECOM
Post-it Notes	PACE
Pens/Markers/Pencils	PACE

#### Equipment:

- 2 tables
- 10 chairs

#### Staff:

1-2 Hosts (E & F)

In-depth understanding of the Framework

#### Kiosk #4 Site Study Areas

#### Boards:

10. Site Study Areas
11. Corridor #5
12. Corridor #6
13. Corridor #7

\*boards should be larger with white space on either side for comment notes

#### Kiosk Process:

- General Discussion on the study areas as requested (at small table or standing around the display boards)
- Comments collected individually and/or on the Display boards
- Kiosk expert will be available for conversation on the Site Study areas for the duration of the event
- Each Site Study Area board will have blank space to collect post-It notes (4 x 6 size, lined) with comments
- 8 ½ x 5 ½ Comment Card with area for general comments

Sample Comment Card:

<p><b>COMMENT CARD:</b> <b><i>Please provide your comments on the Site Study Area.</i></b></p> <hr/> <hr/> <hr/> <hr/> <hr/> <hr/> <hr/> <hr/> <hr/> <hr/> <p>Please let us know which Study Area you are commenting on (Please circle one)</p> <p>Corridor 5                      Corridor 6                      Corridor 7</p>
---

<b>Item</b>	<b>Responsibility of</b>
Laminated copies of Site Study Areas (10 copies, three corridors displayed on each 11 x 17 sheet)	AECOM
Comment Cards and Comment Box	PACE
Markers, Pens and Pencils	PACE
Post-it Notes	PACE

Equipment:

- 2 tables
- 10 chairs

Staff:

1-2 Hosts (E & F)

In-depth understanding of the Site Study Areas

**Kiosk #5      Evaluation Factors**

Boards:

14. Evaluation Criteria – Overview
15. Evaluation Criteria –Criteria Suggestions (white space to collect new ideas)

Kiosk Process:

- General Discussion on the evaluation criteria as requested (at small table or standing around the display boards)
- Please add criteria that you feel are missing
- Kiosk expert will be available for conversation on the Evaluation Criteria for the duration of the event
- One large blank board titled ‘Criteria Suggestions’ to collect post-It notes (4 x 6 size, lined) with comments

Table Resources:

<b>Item</b>	<b>Responsibility of</b>
Markers, Pens and Pencils	PACE
Evaluation Factor and Sub-factor Reference Books (10 copies in each language with large ‘REFERENCE ONLY’ on it)	AECOM
Post-it Notes	PACE

Equipment:

- 2 tables
- 10 chairs

Staff:

1-2 Hosts (E & F)

In-depth understanding of the Evaluation Factors

## Kiosk #6 Evaluation Methodology

### Boards:

16. Evaluation Methodology #1 & 2

### Kiosk Process:

- General Discussion on the study areas as requested (at small table or standing around the display boards)
- Comments collected individually and/or on the Display boards
- Kiosk expert will be available for conversation on the Evaluation Methodology areas for the duration of the event
- 8 ½ x 5 ½ Comment Card with area for general comments

### Sample Comment Card:

**COMMENT CARD:**

***Please provide your comments on the Evaluation Methodology.***

---

---

---

---

---

---

---

---

Please let us know which Evaluation Methodology you are commenting on  
(Please circle one)

Reasoned Argument

Multi-Ranking Design Aid

Both

Neither

Item	Responsibility of
Comment Cards & Collection Box	PACE
Pens/Markers/Pencils	PACE

### Equipment:

- 2 tables
- 10 chairs

### Staff:

1-2 Hosts (E & F)

In-depth understanding of the Evaluation Methodology

## Kiosk #7 Consultation

### Boards:

17. Consultation - Overview
18. Regional Perspectives
19. Community Perspectives

## 20. Community Value Plans

### Kiosk Process:

- General Discussion on the consultation as requested (at small table or standing around the display boards)
  - Two large table cloths:
    - 1) 'What types of Consultation Work'
    - 2) 'What types of Consultation Don't Work'
  - Kiosk expert will be available for conversation on the Consultation aspects for the duration of the event
- Participants asked to write ideas down on either table cloth

### Materials:

Item	Responsibility of
Large Table Clothes (two)	PACE
Pens/Markers/Pencils	PACE

### Equipment:

- 2 tables
- 10 chairs

### Staff:

1-2 Hosts (E & F)

In-depth understanding of Consultation and Community Value Plans

## Kiosk #8 Next Steps – Thank You

### Boards:

21. Next Steps

This area is located close to the exit/welcome area. Comment Sheets and materials are outlined in 'Kiosk #1' above.





---

## **B2   Display Boards**



## Future Interprovincial Crossings in the National Capital Region, Phase 2A



# Welcome

The National Capital Commission (NCC), Ministère des Transports du Québec (MTQ) and Ontario Ministry of Transportation (MTO) are jointly undertaking this Environmental Assessment Study in collaboration with the City of Ottawa and Ville de Gatineau.

This study is following a coordinated environmental assessment process developed in accordance with the Canadian, Ontario, and Québec Environmental Assessment legislations.

Should you have any questions regarding the display material, or any other aspect of the study, please speak to any member of the consultant team or study partners.

Comment sheets are available at the registration desk. Please deposit completed sheets in the comment box or send them by mail or fax. You may also e-mail your comments to the address at the bottom of the form or through our website:

[www.ncrcrossings.ca](http://www.ncrcrossings.ca)

Comments are invited until April 16, 2010.

# Purpose & Objectives of Tonight's Public Event

- To provide information on the Environmental Assessment (EA) Study process
- To obtain comments on the following:
  - Study Design for Phase 2B
    - Site Study Areas for the corridors under consideration
    - List of Evaluation Factors
    - Methodology to be used to evaluate corridors during Phase 2B
    - Consultation Process
  - Scoping Report for EA Study
- To describe regional and community perspectives and the use of community values in Phase 2B

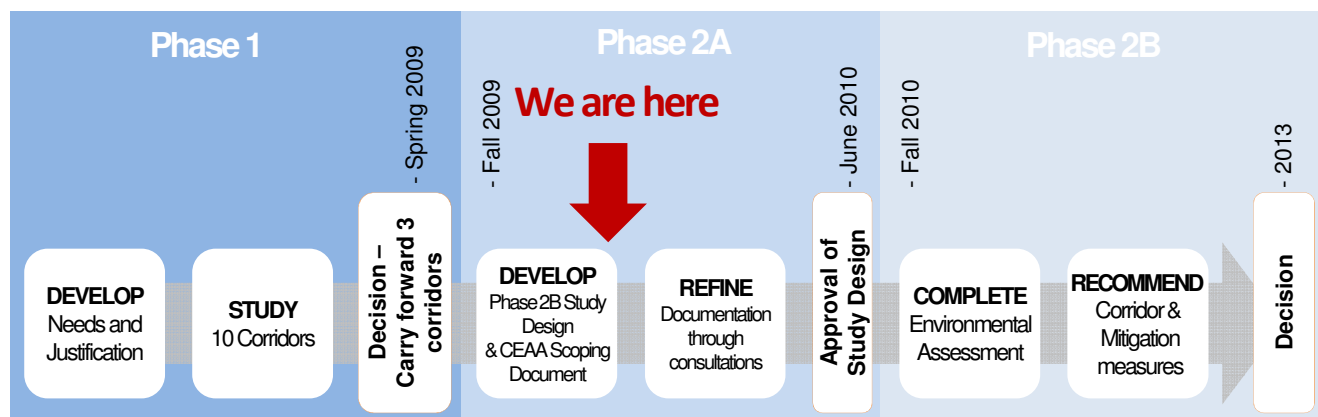
# Background and Context

## Phase 1 Process (completed in 2009)

- Need and justification for a new interprovincial link examined
- Alternative planning solutions assessed
- 10 corridor alternatives were generated west and east of the downtown areas
- 4 series of public events were undertaken during the process
- Three corridors were carried forward to Phase 2 through a decision by the NCC, MTO and MTQ

## Phase 2 Process

- Divided into two – Phase 2A and Phase 2B
- Phase 2A is developing a Study Design and CEA Act Scoping document to guide the scope and process for Phase 2B
- No decision will be made on the most suitable corridor for a new crossing in Phase 2A
- Phase 2B will examine the corridors carried forward from Phase 1 with the objective of recommending one project. The process is described under the Study Design displays
- The following diagram illustrates the study process and schedule:



# EA process

- The EA process is coordinated between federal and provincial agencies because of the interprovincial nature of the study.
- The environmental requirements of Canada, Québec and Ontario will be applied, where possible. Where two or more processes overlap, the more stringent requirements will be applied.
- The EA Study will satisfy the guidelines and operational statements established by the Canadian Environmental Assessment (CEA) Agency, Ontario Ministry of Environment (MOE), and Québec Ministère du Développement durable, de l'Environnement et des Parcs (MDDEP), insofar as possible.
- The CEA Act provides for screenings, comprehensive studies, panel reviews and mediation.
- Phase 2B will be a screening level assessment according to CEA Act regulations. The Scoping Report and Study Design Report detail the proposed requirements for this screening.

## The Scoping Report

- Prepared as part of Phase 2A activities, provides direction for the federal environmental assessment by describing the various administrative, procedural, and technical requirements for the EA.



# Purpose of the Project

(from Phase 1)

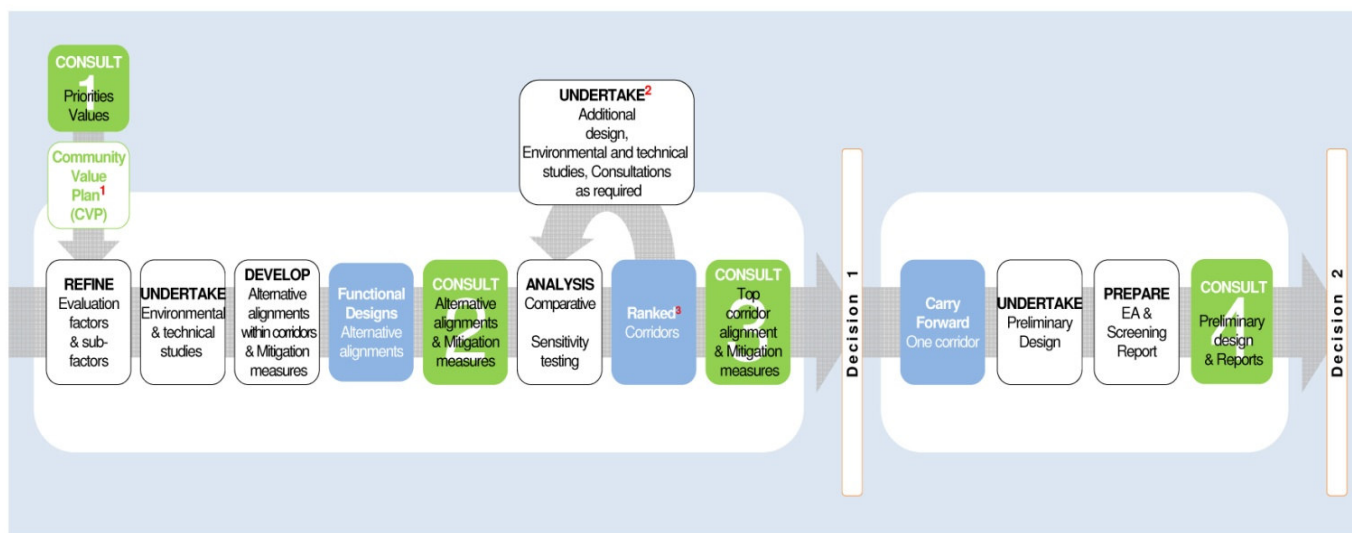
- Enhance quality of life for residents
- Achieve the planned Level of Service objective across the Ottawa River
- Support the regional economy
- Support interprovincial mobility connectivity and continuity
- Link interprovincial truck routes
- Accommodate all modes of travel
- Support interprovincial transit objectives and plans
- Minimize and mitigate significant Natural, Socio-economic and Cultural impacts
- Support societal and economic benefits

# Study Design Overview

- **The following displays describe:**
  - Process framework
  - Site Study Areas for the corridors under consideration
    - Corridor 5 (Kettle Island)
    - Corridor 6 (Lower Duck Island)
    - Corridor 7 (McLaurin Bay/Gatineau Airport)
  - Evaluation Factors
  - Evaluation methodology to be used to evaluate alternatives during Phase 2B



# Phase 2B Process Framework

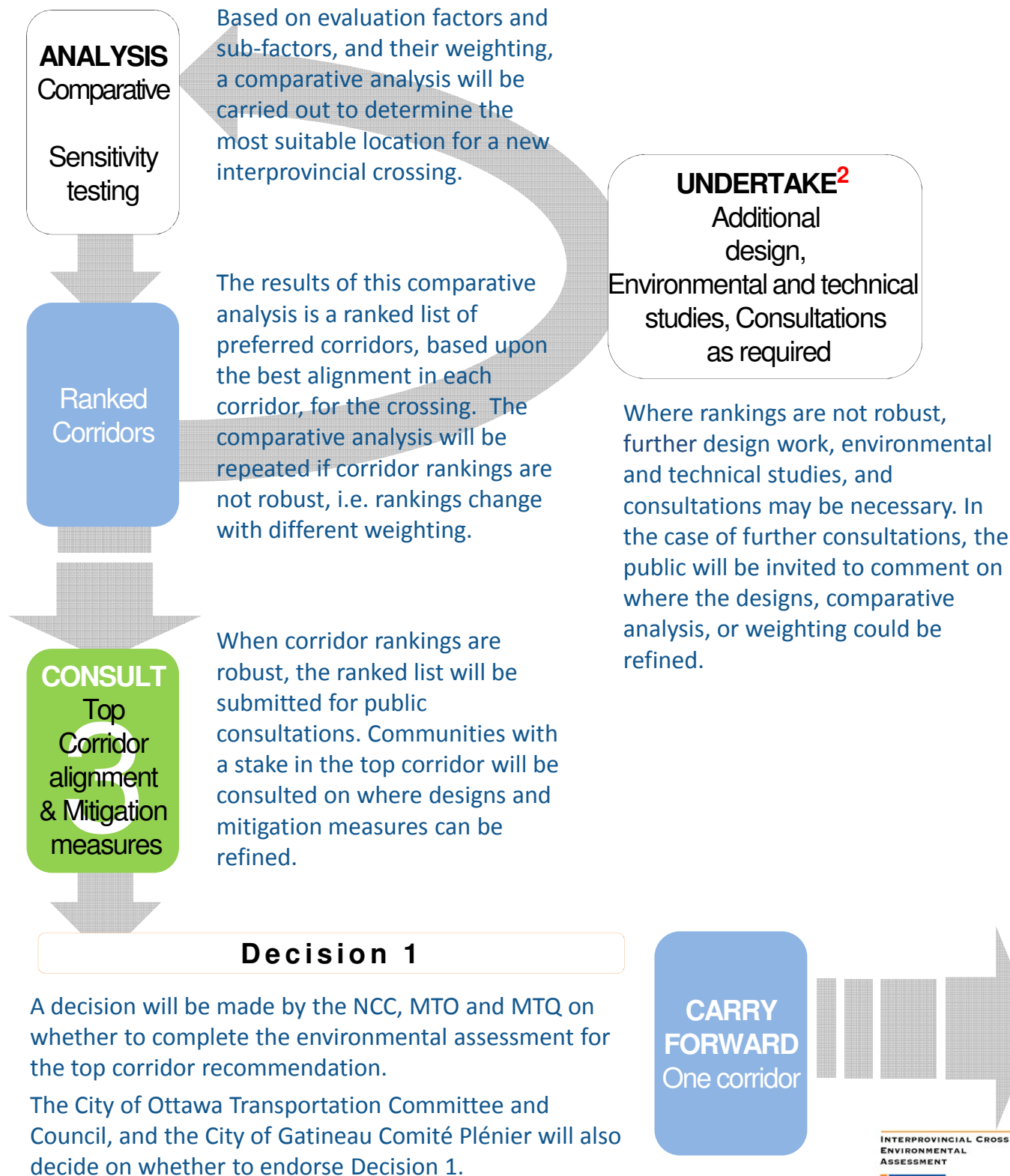


1. In each corridor, one CVP will be developed on each side of the Ottawa River – maximum six CVPs in total
2. Iterative steps undertaken until recommendation of one corridor
3. One alignment per corridor

- **Green Consultation Activity boxes:** These boxes will include public events, community meetings, Public Consultation Group meeting(s). Depending on the results there may be follow-up meetings not explicitly shown in the diagram
- **White Activity boxes:** these boxes describe many of the technical activities necessary to the development and refinement of the project
- **Blue Results boxes:** These boxes represent the results of technical analyses, consultation activities and decisions



# Phase 2B Process



# Phase 2B Process

## UNDERTAKE Preliminary Design

Following the decision to complete the EA with one corridor, the preliminary design will be completed for the Project. Additional studies may be undertaken to detail all components of the Project and corresponding mitigation measures to a level of detail necessary to allow the project proponent, responsible authorities and the public to properly review and assess the project.

## PREPARE EA & Screening Report

The Environmental Assessment process, including a description of the evaluation factors, comparative analysis, the choice of rankings, and the design of the Project, will be documented in an EA Study Report. A Screening Report will also be completed as per the requirements of the CEA Act.

## CONSULT 4 Preliminary design & Reports

The EA Study Report and Screening Report will be submitted for review by study partners and project stakeholders including the public. This fourth round of consultations seek to refine the project designs and documentation in preparation for a decision by the Project proponent.

## Decision 2

The project proponent (the NCC) and responsible authorities will make a decision under the CEA Act with respect to the significance of adverse environmental effects of the Project.

# Site Study Areas

## Site Study Area

- The Site Study Area is the potential project footprint, namely, the area where new construction may take place, as well as areas or structures that are being modified, decommissioned or abandoned. The Site Study Area may not include all of the area required for mitigation measures.

## Local Study Area

- The Local Study Area is that area existing outside the Site Study Area boundary, where there is a reasonable potential for the occurrence of environmental effects from the project. The boundaries may change, as appropriate, following a preliminary assessment of the spatial extent of potential environmental effects.

## Regional Study Area

- The Regional Study Area is defined as the area within which there is the potential for cumulative effects.



# Corridor 5 Kettle Island





# Corridor 6 Lower Duck Island





# Corridor 7 McLaurin Bay/ Gatineau Airport





# Evaluation Factors

- The factors to be evaluated in Phase 2B work must:
  - Be quantifiable, measurable or qualitatively characterised
  - Allow for a meaningful distinction between the three corridor alternatives
  - Meet responsible agencies guidelines and operational statements regarding environmental assessments
  - Respond to public concerns that are not already covered by responsible agency requirements
- The following is a simplified list of factors. The full list of sub-factors from Phase 1, including definitions and measurements is provided on the Resource table, along with the list for Phase 2B

## **Natural Environment**

Species at Risk (SAR), air quality, fisheries and fish habitat, hydrotechnical, terrestrial, wetlands, environmentally significant areas

## **Cultural Environment**

Heritage and archaeological resources, aboriginal interests

## **Water Use and Resources**

Water treatment facilities, water wells

## **Social Environment**

Community including noise and vibration, cohesion, aesthetics and water views; recreation including cycling, parks, pathways, and sailing activities

## **Land Use and Property**

Official Plans, development, property required, museum runways, hospital, utility relocations, residential, agricultural, contamination

## **Economic Environment**

Business, economic development, travel time savings

## **Traffic and Transportation**

Trucking, hazardous good movement, traffic operations, transit operations, road design factors

## **Costs**

- In Phase 2B, weights will be assigned to factors and sub-factors as described in the Sensitivity Testing. The public will be asked to contribute to weighting values in Round 2 consultations

# Evaluation Methodology

## Two complementary approaches will be employed:

### — Reasoned Argument approach

- Examination of the relative differences in net impacts between corridors based on:
  - Government legislation, policies and guidelines
  - Municipal development policies
  - Issues and concerns obtained through consultations with responsible agencies, community groups and the general public held throughout the entire Environmental Assessment process
  - Project team expertise

### — Multi-Criteria Decision Aid (out-ranking approach)

- Arithmetic approach
- Includes pair-wise comparison to determine preference relationships between alternatives with regard to each evaluation sub-factor
- Can handle both qualitative and quantitative information
- Employs weighting of different factors and sub-factors. Weighting is used in sensitivity analyses on corridor rankings to confirm the robustness of results obtained

# Consultation in Phase 2B

At each round of consultation there will be activities that solicit:

**REGIONAL** perspectives

**COMMUNITY** perspectives

**FIRST NATIONS** perspectives\*

There are at least 4 rounds of consultation throughout Phase 2B

The **FEEDBACK** at each round of consultation will become **INPUTS** into the subsequent phase of technical design

\*First Nations consultation methods are being refined through ongoing discussion with First Nations groups

# Regional Perspectives

Residents and stakeholders from throughout the Region who have an interest in the project. For example:

- Residents from anywhere in the Region who will be personally impacted by the project
- Residents from anywhere in the Region who want to provide input
- Any group that would like to provide group input on the project

## Potential Consultation Activities:

- ‘Vox Pop’ or ‘Streeter Surveys’  
1 minute informal survey in various public gathering places
- World Café  
Large events with multiple small groups
- Website  
Online consultation that is information driven and/or interactive

# Community Perspectives

## Impacted Communities

Interested community organizations or relevant subject-specific interest groups who are considered to be impacted by the project decisions, for example:

- Residents represented by community organizations
- Business organizations in the King Edward area (or other areas)
- Environmental Groups
- Seniors, Youths, Cyclists, Advisory Committees, or advocacy groups

## Corridor Communities

Interested community organizations and/or individual citizens within or adjacent to the proposed corridors

- Residents within the corridor areas
- Schools, businesses, and institutions within the corridor areas

## Potential Consultation Activities:

- Community and Stakeholder Meetings
  - Small Group meetings
- Community Value Plans
  - Events to capture the values of directly impacted communities to determine technical considerations for the corridors
- Charettes
  - Hands-on meetings working on preliminary design concepts

# Community Value Plans

A unique aspect of the Phase 2B Study Design will be the development of Community Value Plans (CVP's) in each of the proposed corridors.

A Community Value Plan is a document that captures the cultural, social, historical, and environmental values shared by a particular community. Its purpose is to provide the Project team with a more in-depth understanding of the communities that are directly impacted by a decision.

Community Value Plans will be developed as a result of input collected at Round 1 of public consultations

The CVP's will then be used by the Project team to assist in the Functional and Preliminary Designs of the three corridors

The CVP's will also help identify mitigation and enhancement measures tailored for each corridor



# Next Steps

- Complete other consultation activities for April:
  - Meet with other community groups as planned
  - Meet with the Public Consultation Group and the Technical Advisory Group
- Review and consider input received
- Prepare Study Design Report and CEA Act Scoping Document
- Post the documents on web site
- Present results to the Gatineau Comité Plénier and the Ottawa Transportation Committee
- Present results to the NCC



# Thank You

**We encourage you to provide your comments in writing.**

All information/comments received will be maintained on file for use during the study and may be included in study documentation. With the exception of personal information, all comments will become part of the public record.

Comment sheets are available. Please deposit completed comment sheets in the box provided or mail/fax/e-mail your comments to the address shown on the bottom of the **comment sheet by April 16, 2010.**

You can also visit the study web site at **[ncrcrossings.ca](http://ncrcrossings.ca)** to view the draft Study Design and CEA Act Scoping Document, public event displays and to provide your comments.

If you would like to receive future study notices, please request that your name be added to the project mailing list by filling out a comment sheet or visiting the web site.