



NEWSLETTER

Summer 2011

Context

The different levels of government responsible for planning and managing the National Capital Region have long been aware of the area's interprovincial transportation challenges. In addition to the obvious truck impacts through the downtown core, previous planning studies have identified the Region's lack of sufficient interprovincial crossing capacity during peak hours as a key constraint to an integrated and efficient interprovincial transportation network.

Recognizing this, the NCC, the ministère des Transports du Québec and the Ontario Ministry of Transportation have formed a partnership to identify a potential new inter-provincial crossing, working with the Cities of Ottawa and Gatineau. The selection and ultimate establishment of an additional future crossing, following a sound environmental assessment process, is an important step towards the enhancement of interprovincial and regional transportation.

In May 2011, Phase 2B was initiated by the Roche-GENIVAR Joint Venture. Phase 2B of the Study is to be completed in 2012, and environmental approvals are currently scheduled to be completed in December 2013.

WHAT'S NEW?

Round 1 of Phase 2B Public Consultation (defining Priorities and Values) is defining, in greater detail than previously considered in Phases 1 and 2A, site specific community values in neighborhoods adjacent to the three candidate corridors under study that can be used in the development of future functional designs. These values will be considered and respected and protected where possible as community value plans are developed. To capture these values the Interprovincial Bridge Crossing EA study includes several methods for public engagement including: website consultation (for information and to provide comments); Community Value Planning Workshops; World Café workshops; On-Street Surveys and meetings with community associations. The Community Value Planning Workshops and World Café events occurred in June. So far, close to 800 residents have been engaged in round 1 of Phase 2B Public Consultation.

These plans are now available on-line. Members of the public can review and provide additional comments at: www.ncrcrossings.ca

Four rounds of Public Consultation in Phase 2B

The Work Plan for Phase 2B of the Study involves four rounds of public consultation as described in the Study Design Report. They include:

- **Round 1** will receive input from the communities, both local and regionally, to define the values in the corridors under study, and discuss evaluation criteria and mitigation to be considered.
- **Round 2** will receive input on functional designs including mitigation or avoidance, measurements of the net effects in the corridors under investigation, and the importance of competing evaluation criteria.
- **Round 3** will receive input on the rankings of crossing alternatives and sensitivity testing of the evaluation. If necessary, elements of the evaluation may be revisited to obtain clarity on the technical evaluation.
- **Round 4** will present the preliminary design of the preferred corridor and define mitigation measures in the EA.

Round 1 Public Consultation Go On-Line

Do it Yourself Kits are available for you to comment on issues and values that you think should be considered when making such a significant decision for the Region and your neighborhoods. They are available on the www.ncrcrossings.ca website.

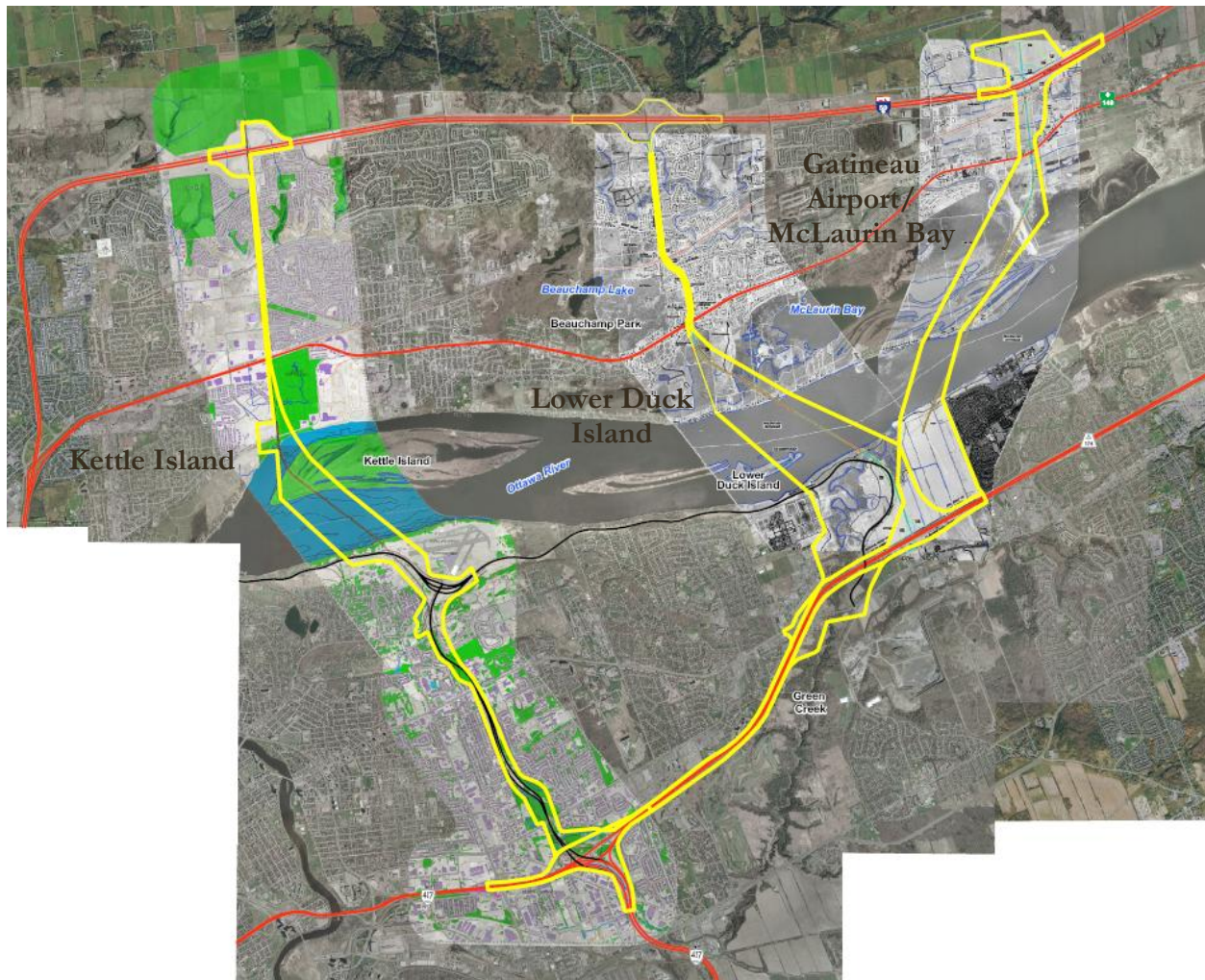
Further, as a follow up to June's consultation meetings, members of the public are invited to comment on line at www.ncrcrossings.ca on the community values plans and the summaries of the World Cafe workshops.

The Round 1 workshops held in June have provided both Regional and Local perspectives on the project. Input was received from a range of stakeholders, including residents from Gatineau and Ottawa that are located within or adjacent to one of the three candidate corridors, those that are not located in immediate proximity to a corridor but that stand to be affected by a future crossing, as well as those not directly affected.

Summaries of these workshops are now posted on line, and are available for comment until August 31, 2011.

Input will then be incorporated into these documents and Round 1 summaries of the Community Value plans will be posted online. These plans will continue to evolve throughout Phase 2B and will ultimately define the commitment of the EA for the selected corridor.

Corridors Under Study



Three corridors are under study for a new interprovincial bridge crossing to link the Cities of Ottawa and Gatineau. Phase 1 of the Study, which was carried out from 2007 to 2009 assessed the need and short listed these three crossing locations as the preferred candidate corridor locations. The need for a new crossing was defined to accommodate growth of the Region since the last bridge was built in the early 1970's, remove heavy trucks from the downtown and promote tourism in the Nation's Capital. The need and the recommendation to study these three corridors for further study have been endorsed by both cities, and provinces and the federal government. Phase 2A, completed in 2010, defines a Study Design document that describes a "blue print" for undertaking the remainder of the study (the remainder of the study is described as Phase 2B) in 2011 and 2012. Phase 2B was launched in the spring of 2011 and will be structured to include 4 rounds of consultation and technical activities. This phase is expected to complete the EA process by December 2013.