

Interprovincial Crossings

Community Value Planning Workshop

David Wilson
Project Planner
Howard Williamson
Public Consultation

June 15, 2011

Project Schedule and Process

- Round 1: Priorities and Values (Summer 2011)
- Round 2: Corridor-specific Input (Winter/Spring 2012)
- Round 3: Ranked Corridor Input (Spring 2012)
- Round 4: Review of EA Study Report and Preliminary Design (Fall 2012 / Winter 2013)

Approach and Methodology

- Allow communities to participate as an integral part of the project scoping (functional designs).
- Allow all participants to understand the decision-making process documented in a traceable structured framework so that competing objectives are clearly understood
- Provide an unbiased ranking of the alternatives – focusing on the integrity of the Evaluation Committee. The acceptance by all communities of the outcome of the ranking of alternatives relies on the integrity of this group.
- All elements of the environment have value and that a preferred solution will respect a balance of human and environmental resources.

Background Phase 1 – 2007-2009

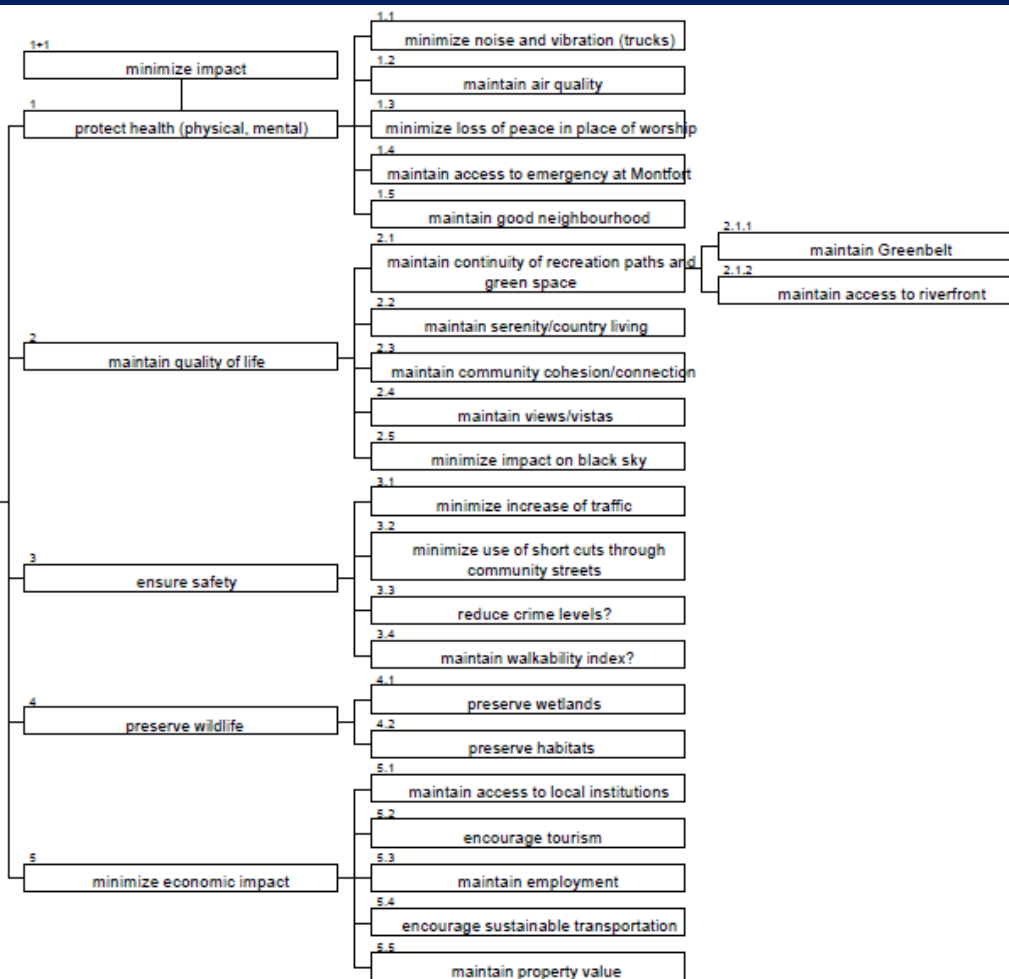
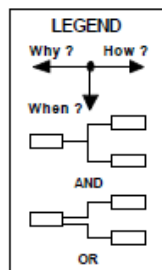
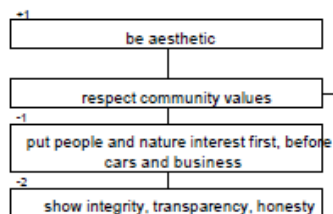


Phase 2A Consultation

- Hundreds of community values - can be reduced to 32 values (lots of redundancy).
- 32 were placed into a functional tree, which shows there are 5 main issues/values:
 - Health
 - Quality of life
 - Safety
 - Wildlife
 - Economic impact

Community values Ottawa-Gatineau Bridge

May 18th, 2011



COMMUNITY VALUE PLANNING WORKSHOPS

Community Value Planning Workshops – Lucie Parrot and David Wilson

- These sessions are for residents who reside in the community within one of the Corridor Community Groups.
- The objective is to collect corridor community perspectives, issues, and identify areas of significant interest.
- Input on evaluation criteria and priorities.



Concept

- Community Value Planning
 - Interactive consultation
 - Individual and group engagement processes
 - Need many perspectives to define community expectations

Corridor 6

Site Study Area

- A bridge at Lower Duck Island would connect Highway 50 via Lorrain Boulevard (Quebec side) and Road 174 (in Ottawa). On the Ontario side, it would cross the NCC Greenbelt pass near Green's Creek just east of the Canotek Business Park to connect to Ottawa Road 174. It would then widen the Ottawa Road 174 westerly to the "Split" on the Ottawa Queensway.



Other Consultation Activities

- World Café June 18;
- Street Interviews;
- Web-based comments; and
- On-line tool kit.

World Café

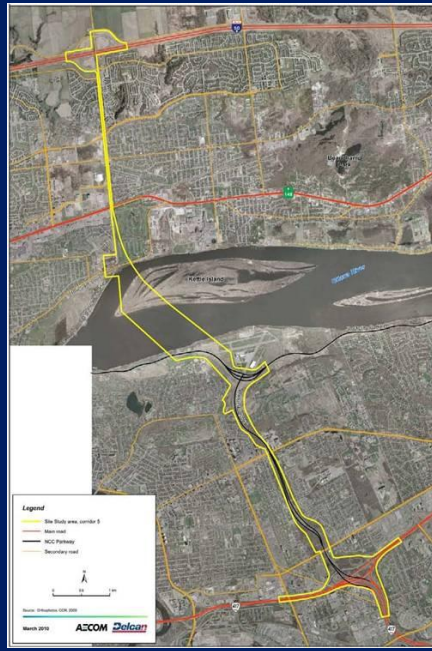
- Half day Saturday June 18 (9:00 am until noon)
- Give an overview theatre style;
- Participants pre-register on line at <http://www.ncrcrossings.ca>;
- 6 different discussion areas with 5 questions that will encourage discussion at each table;
- Allow 20 minutes per discussion with 5 people per table, each table has a specific discussion topic;
- Facilitator takes notes at each table; and
- People move to the next table and discuss the topic at that table.



Street Surveys

- Street surveys to be undertaken in June
- Undertaken on both sides of the river
- Interviews to take place in community centres, shopping malls etc., where people visit
- Will be used to gather information on values and priorities as they relate to a new interprovincial bridge.

“Do it Yourself” Kit



What are the most significant values/features/assets in Corridor 5 that should be considered?:

What type of design or mitigation would be appropriate for this value (if you can describe the nature, extent, characteristics, location that you think would be appropriate, if any):

“Do it Yourself” Kit

How could an interprovincial crossing benefit the National Capital Region?
What types of design features should be incorporated into the project to make this bridge an attraction in the National Capital Region?
Other comments:
In your opinion, what is the priority of the following values? Please rate the importance from 1 to 10, with 10 being the most important and 1 being the least important.
Livable Communities
Air Quality/Human Health - 1 2 3 4 5 6 7 8 9 10
Design/Aesthetics - 1 2 3 4 5 6 7 8 9 10
Construction Impact - 1 2 3 4 5 6 7 8 9 10
Enhanced Use of bridge (pedestrians, bikers, joggers, site seeing lookouts etc.) - 1 2 3 4 5 6 7 8 9 10
Terrestrial Habitat - 1 2 3 4 5 6 7 8 9 10
Fisheries/Wetlands - 1 2 3 4 5 6 7 8 9 10
National Capital Region - 1 2 3 4 5 6 7 8 9 10
Other personal (description and priority please):
Other personal (description and priority please):
Other personal (description and priority please):
Add line if needed

Home

What's New ?

Next Steps

Background

Related Links

Frequently Asked Questions

Public Consultation

Media Room

Resources

Contact Us

Home

Phase 2B has been initiated as of May 2011 by the Roche-GENIVAR Joint Venture. **Phase 2B of the Study is to be completed in 2012, and environmental approvals are currently scheduled to be completed in December 2013.** The *Work Plan* includes four rounds of consultation as per the Study Design developed in Phase 2A by Delcan/AECOM.

This Environmental Assessment (EA) Study is a component of the long-term transportation planning by the Federal, Provincial and Municipal authorities in the National Capital Region (NCR). The purpose of this Study is to assess potential interprovincial bridge locations and the corridors leading to and from them.

A new bridge will be an important addition to the Region's landscape and will shape the development, growth and vibrancy of the area, for well into the future. As the Region will experience considerable increases in population and employment, a new bridge will be essential in helping to alleviate transportation issues resulting from that growth. In addition, there are major commercial and social exchanges between Ontario and Quebec, and specifically between the Cities of Ottawa and Gatineau. A new bridge will be a major facilitator for a more integrated economy and an enhanced cultural and social cohesion between both cities.

The Study is comprised of two phases. Phase 1, which was completed in January 2009, looked at the need and timing for new interprovincial crossings and evaluated a number of corridors throughout the Region. Now in Phase 2, the Study is looking more closely at the three locations which received the highest ratings in Phase 1:

- Kettle Island
- Lower Duck Island
- Gatineau Airport/McLaurin Bay.

This second phase of the EA Study will take approximately four years to complete and will involve extensive public consultation at each stage of the process. Phase 2A, which was completed in June 2010, had a mandate to consult with communities, stakeholders and members of the public to obtain their input into the development of the Study Design (methodology for selecting a location) that will be used during Phase 2B, the final step in the EA.

As a result of input submitted during Phase 2A, the Consultant Team was able to make informed changes to the Study Design and CEA Act Scoping document. Details on the Phase 2A Consultation Program and the impact it had in the development of the above reports are outlined in the Consultation Summary Report.

This Environmental Assessment (EA) Study is being directed by a *Steering Committee* (SC) under the funding partnership of the National Capital Commission (NCC), the Ontario Ministry of Transportation (MTO) and the ministère des Transports du Québec (MTQ). It is being guided by a Study Team (ST) consisting of the funding partners and the cities of Ottawa and Gatineau.

What's new ?

Phase 2B Round 1 Consultation –
Priorities and Values

Planned Public Events

Final CEA Act Scoping Document

Final Study Design Report

Final Consultation Summary
Report

Suscribe for updates

First Name:

Last Name:

E-mail:

Funding Partners



Technical Partners



Consultation Next Steps

- Community Value Planning Workshops in Ottawa and Gatineau – June
- World Cafes in Ottawa and Gatineau
- Streeter Interviews
- On-line Consultation and tool kits over the summer

Community Value Planning Workshop

Dave Wilson

Sections

River Crossing

Section C

Section B

Section A

